

SERVICES and ACTIVITIES

offered by the

**INSTITUT NATIONAL
DE SANTÉ PUBLIQUE
DU QUÉBEC**

promotion, prevention, and protection • act
determinants • individual and community de
mental health • toxicology • occupational
diseases • microbiology • safety and injur
effects of public policy • laboratory an
services • promotion of healthy lifestyles
of chronic diseases • monitoring popula
research and innovation • expertise and re
analysis and evaluation of health systems

Québec 

The Institut national de santé publique du Québec (INSPQ) was created in 1998 following the adoption of its act of incorporation (RSQ, chapter I-13.1.1). Its experts come from fields as distinct as applied science, health sciences, social sciences, and humanities and work with the health and social services network to develop and pool public health knowledge and skills.

VISION

The institute seeks to be Québec's province-wide public health expertise and reference centre. Our goal is to advance knowledge and propose cross-sectoral strategies and endeavours that will improve the health and well-being of Québécois.

MISSION

Our mission is to support Québec's Minister of Health and Social Services, regional public health authorities, and health and social services institutions in carrying out their public health responsibilities, by offering our expertise and specialized laboratory and screening services.

MORE SPECIFICALLY, THIS MISSION FOCUSES ON:

- developing knowledge and helping monitor public health and well-being and its determinants;
- developing new knowledge and approaches in health promotion, prevention, and protection;
- evaluating the effects of public policy and health care systems on the health of Québécois;
- promoting the development of public health research and innovation;
- providing opinions, expertise, and advice;
- ensuring screening and laboratory services, particularly in microbiology and toxicology, ranging from providing support to maintaining quality;
- making public health expertise available through ongoing training activities;
- promoting the transfer and sharing of knowledge and international collaboration;
- contributing to the development and implementation of ministerial orientations in health and social services, including, first and foremost, Québec's Public Health Program.

The institute is also responsible for establishing a public health ethics committee with the mandate to examine health plans and surveys that monitor population health and its determinants, and for advising public health authorities about issues that may be raised in applying the *Public Health Act*.

POSITION STATEMENT

- The institute is an expertise and reference centre.
- As a broker of expertise, it contributes to the definition and understanding of public health issues, as well as to the identification of interventions with a positive impact on the determinants of population health deemed appropriate based on the contexts relevant to the decision-making process.
- It produces and shares scientifically based knowledge, through a range of quality products and services.
- It ensures the dissemination of this knowledge in a timely manner using the appropriate wording and a suitable format to effectively support decision makers, health care workers, and partners in their endeavours pertaining to population health determinants.

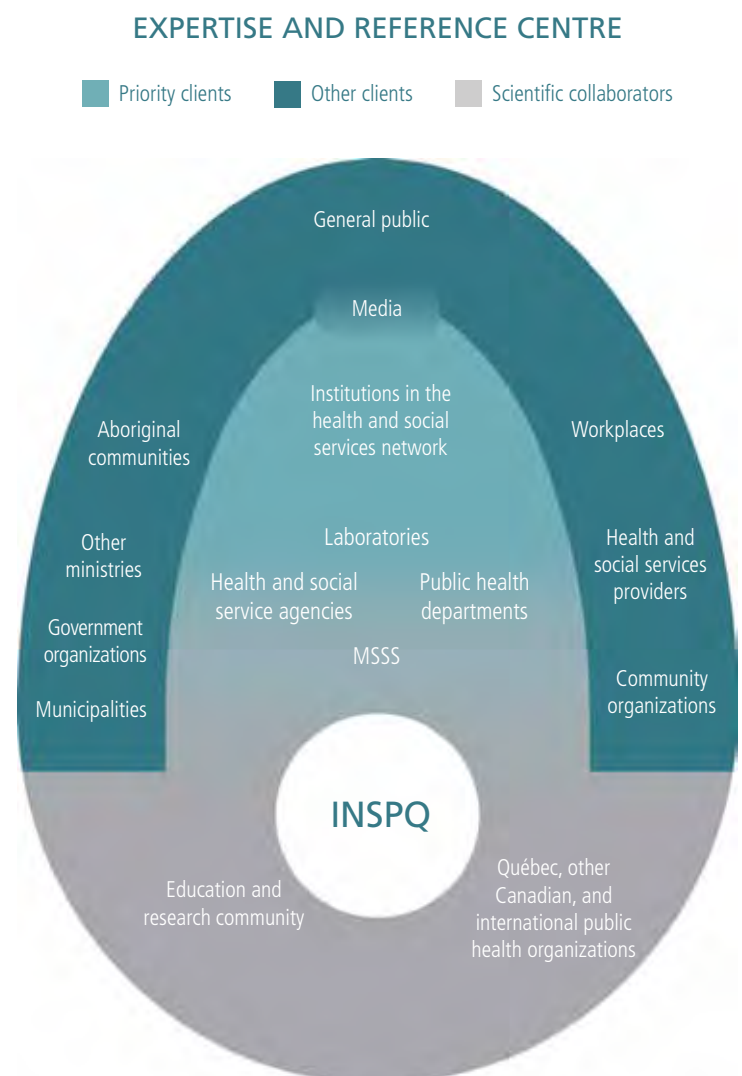
CLIENTS

According to the institute's act of incorporation, the following clients are given priority access to our services:

- Québec's Minister of Health and Social Services and the Ministère de la Santé et des Services sociaux (MSSS)
- Health and social service agencies and regional public health authorities
- Institutions in the health and social services network

Other important clients use our services:

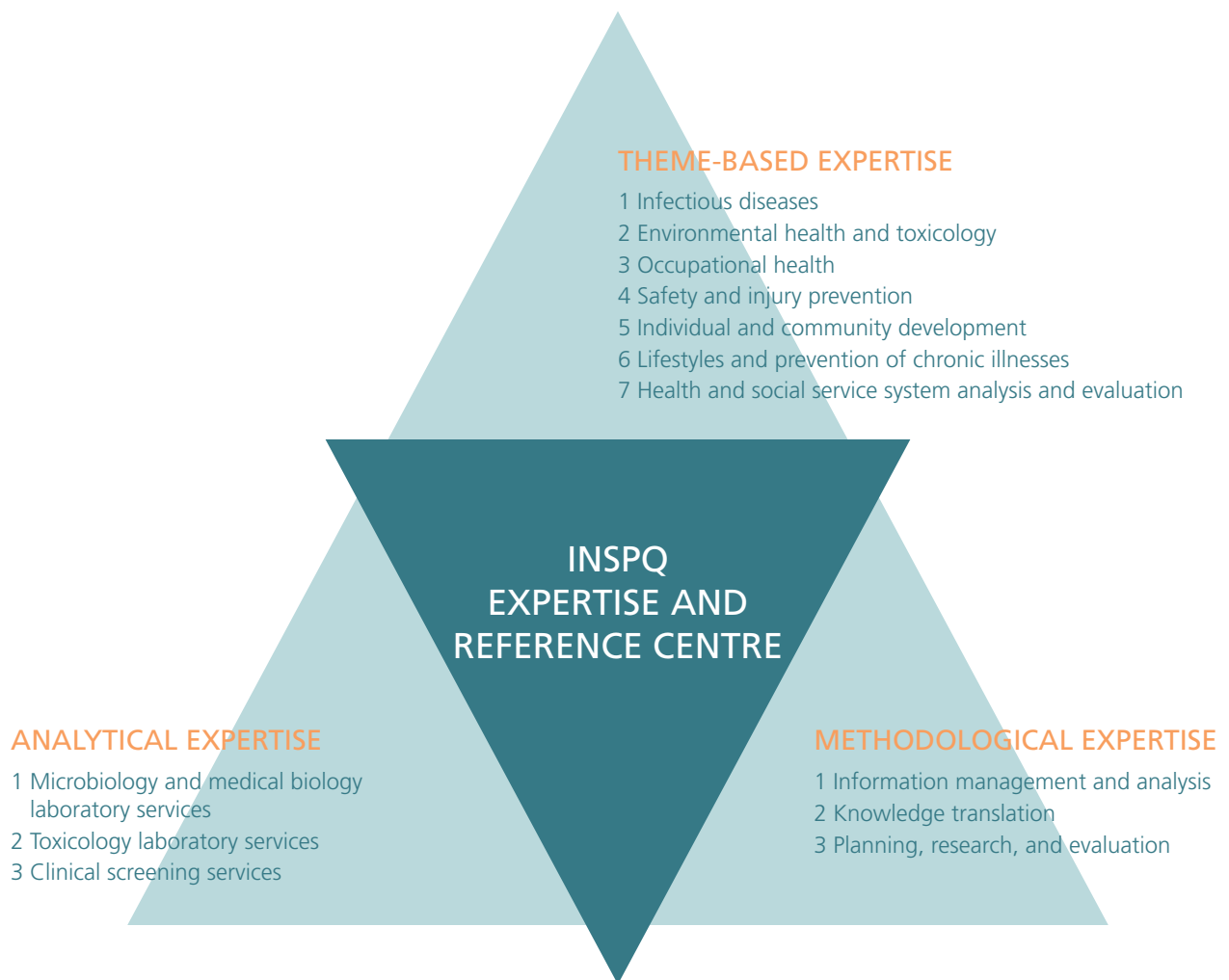
- Other government departments and organizations, and municipalities
- Institutions in the fields of education and research
- Health and social service providers and community organizations
- Canadian and international public health organizations
- Aboriginal communities
- The private sector
- The general public



THREE AREAS OF EXPERTISE

To effectively perform its role of assisting in public health decision making, the institute relies on effective networking involving three areas of expertise:

- 1 theme-based expertise adapted to the evolving needs of the population and addressing current public health issues;
- 2 analytical expertise developed by two reference laboratories (the Québec public health laboratory known as Laboratoire de santé publique du Québec and the Québec toxicology centre known as Centre de toxicologie du Québec), as well as by specialized clinical screening services;
- 3 cross-cutting methodological expertise that supports the teams in the institute's different areas of activity and helps optimize scientific production processes within the organization.



These three areas of expertise are complementary and synergetic and are subdivided into several fields of activity organized according to public health needs and issues.

THEME-BASED EXPERTISE

1 Infectious diseases

This field of expertise anticipates emerging problems, enabling interventions to be directed towards protecting the public from the spread of infections and potential epidemics. It covers four areas of activity:

- 1 Immunization
- 2 Sexually transmitted and blood-borne infections (STBBIs) and biomonitoring
- 3 Nosocomial infections and risks of infection in a health care setting
- 4 Monitoring, prevention, and control of infectious diseases

2 Environmental health and toxicology

This field of expertise is concerned with the prevention of health problems caused or aggravated by the biological, chemical, or physical contamination of various environments; public health protection in terms of environmental threats and threats from consumer products, medications, or drugs; and the social repercussions brought about by certain environmental issues. It is subdivided into four areas of activity:

- 1 Water, food, soil, and product quality
- 2 Air quality
- 3 Adaptation to climate change
- 4 Environmental health monitoring, skills development, and evaluative approaches

3 Occupational health

This field of expertise addresses the prevention of risks associated with occupational illnesses, workplace health, and the health condition of workers, as well as the promotion of workplace health. It covers six areas of activity:

- 1 Monitoring health in the workplace
- 2 Respiratory diseases
- 3 Musculoskeletal disorders
- 4 Organization of work and working conditions
- 5 Maternity and work
- 6 Noise and hearing

4 Safety and injury prevention

This field of expertise seeks to promote safe, non-violent environments and behaviours by addressing issues such as violence and injuries (incurred on the road, in the home, while playing sports, or during recreational activities), and to support local communities in their efforts to improve public safety. It covers three areas of activity:

- 1 Local safety promotion strategies
- 2 Prevention of unintentional injuries
- 3 Prevention of interpersonal violence

5 Individual and community development

This field of expertise addresses several individual and group determinants of health from a developmental and community perspective. It explores the development of individuals, their living conditions, and cross-cutting strategies that affect the environments in which they live. Four areas of activity are included in this field of expertise:

- 1 Perinatal period and early childhood
- 2 Health and well-being of children in the school environment
- 3 Mental health promotion and mental illness prevention
- 4 Community development

6 Lifestyles and prevention of chronic illnesses

This field of expertise specifically addresses the creation of environments and the adoption of public policies that promote the acquisition and maintenance of healthy lifestyles in order to prevent the incidence, morbidity, and mortality associated with chronic diseases. It covers five areas of activity:

- 1 Smoking
- 2 Nutrition, physical activity, and weight-related problems
- 3 Alcohol, drugs, gambling
- 4 Dental health
- 5 Reproductive health and the prevention of unwanted pregnancies

7 Analysis and evaluation of health and social service systems

This field of expertise seeks to support service planning from the perspective of population-based responsibility through the analysis and assessment of the needs of populations, population-based coverage of health and social services, as well as the impact of care and services on the population. It is divided into three areas of activity:

- 1 Development and analysis of epidemiological measures of chronic diseases, injuries, and their determinants
- 2 Analysis of screening policies and policies to control cancer and other chronic diseases
- 3 Evaluation of the organization of care and services

ANALYTICAL EXPERTISE

1 Microbiology and medical biology laboratory services

The Québec public health laboratory known as Laboratoire de santé publique du Québec provides the expertise to confirm diagnoses of infectious diseases and rare infectious diseases, and manages external quality assurance programs in medical biology.

2 Toxicology laboratory services

The Québec toxicology centre known as Centre de toxicologie du Québec provides specialized analytical toxicology services on various substances (metals, organic contaminants, medications, drugs, etc.) and quality assurance services based on intercomparison programs.

3 Clinical screening services

The institute offers clinical screening services by managing a mobile unit for screening mammograms for regions that are remote/isolated or experiencing service disruptions, and a mobile unit for conducting screening exams to promote workers' health (audiology and chest X-rays).

These three areas of expertise rely on a recognized capacity to collect, incorporate, and interpret all data, information, and knowledge relevant to decisions associated with public health policies, programs, and services.

The institute also relies on a quality approach focused on ongoing improvement at all levels of the organization, the development of individual and group skills among its staff, as well as the quality of its organizational processes to respond appropriately and quickly to the requests and needs of its main client groups.

METHODOLOGICAL EXPERTISE

1 Information management and analysis

This cross-cutting field of expertise sheds light on the scope and evolution of various issues associated with health and well-being and enables better management and consideration of health information in decision-making processes, while contributing to the development of new theories and methods for monitoring public health. The ongoing portrait of population health and the monitoring of social inequalities are two priority analytical approaches. The public health Infocentre plays a role by conducting information-based (assistance in making decisions) and operational-based (support for screening programs) information systems activities and projects agreed upon by the public health system.

2 Knowledge translation

This cross-cutting field of expertise undertakes a range of activities to make available and accessible knowledge that is essential to public health activities. It groups together skills development and knowledge transfer activities, communications activities, as well as documentation services, including scientific monitoring. It also includes activities that promote the adoption of public policies that can improve the health of the Québec population.

3 Planning, research, and evaluation

This cross-cutting field of expertise groups together activities that can engage the Institute's theme-based, analytical, and methodological expertise to respond to the needs and evolution of public health issues; this is undertaken in collaboration with our institutional partners in Québec, elsewhere in Canada, and around the world. More specifically, planning activities focus on the scientific program's implementation and monitoring. Intervention research and evaluation activities are primarily carried out to support the implementation and evolution of the Québec National Health Program. This field of expertise also includes an "Aboriginal Health" component, to support public health knowledge and expertise development and action by our partners in Aboriginal communities.

PRODUCTS AND SERVICES OFFERED

| PRODUCT CATEGORY | DESCRIPTION | EXAMPLES |
|--|--|---|
| SPECIALIZED INFORMATION | All of the products associated with drawing upon, developing, sharing, and using scientific knowledge. | <ul style="list-style-type: none"> • Scientific opinions • Systematic reviews of knowledge • Research reports |
| ADAPTED INFORMATION | All of the products specifically adapted to the knowledge requirements of various target audiences. | <ul style="list-style-type: none"> • Theme newsletters • Portal and web tools • Summary documents • Guides for the public |
| GUIDES AND TOOLS | Products developed to guide the pursuit of mandates or support the activities of those responsible for policies and programs, managers, and professionals. | <ul style="list-style-type: none"> • Professional practice guides • Frameworks • Balanced scorecards |
| SERVICE CATEGORY | DESCRIPTION | EXAMPLES |
| EXPERTISE AND ADVICE | Services provided directly to managers and professionals to take advantage of available scientific knowledge to assist in decision making or support a specific mandate, without the expertise provided being the subject of a written product of the INSPQ. | <ul style="list-style-type: none"> • Expertise as a member of a working group or scientific committee • Scientific consultations • Support towards the methodological development and interpretation of laboratory tests |
| TRAINING | Services seeking to ensure the acquisition of knowledge and skills in fields or areas associated with public health. | <ul style="list-style-type: none"> • Training workshops • Online training • Specialized lectures or conferences • Student internships • Tutoring |
| SPECIALIZED LABORATORY AND SCREENING SERVICES | Laboratory and testing services with a view to supporting clinical or population-based diagnoses. | <ul style="list-style-type: none"> • Specialized toxicological and microbiological analyses • External quality assurance programs for diagnostic and laboratory services • Clinical screening tests |

Contact information for the institute

Québec region

Head office

945 Wolfe Avenue
Québec, QC G1V 5B3
418-650-5115

D'Estimauville offices

2400 D'Estimauville Avenue
Québec, QC G1E 7G9
418-666-7000

Montréal region

Crémazie offices

190 Crémazie Blvd. E
Montréal, QC H2P 1E2
514-864-1600

Sainte-Anne-de-Bellevue

Laboratoire de santé publique du Québec
Sainte-Marie Rd.
Sainte-Anne-de-Bellevue, QC H9X 3R5
514-457-2070

For more information,
visit our Web site: www.inspq.qc.ca
or contact us at 514-864-1600, ext. 3300

**Institut national
de santé publique**

Québec 

health promo
health deter
environmen
infectious dis
prevention •
screening se
prevention o
health • rese
centre • ana