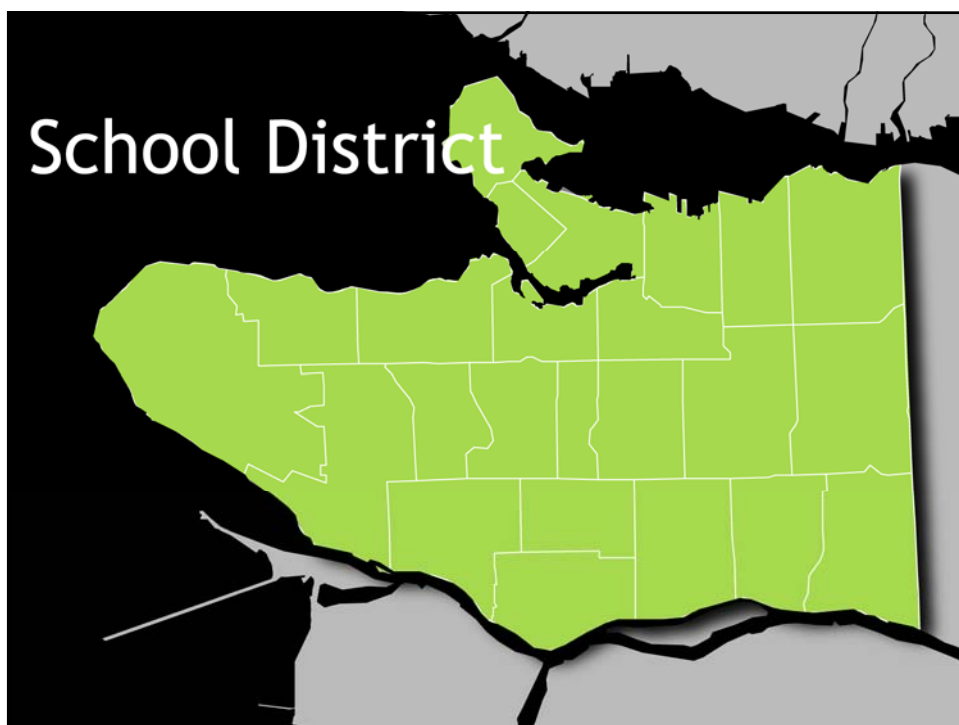


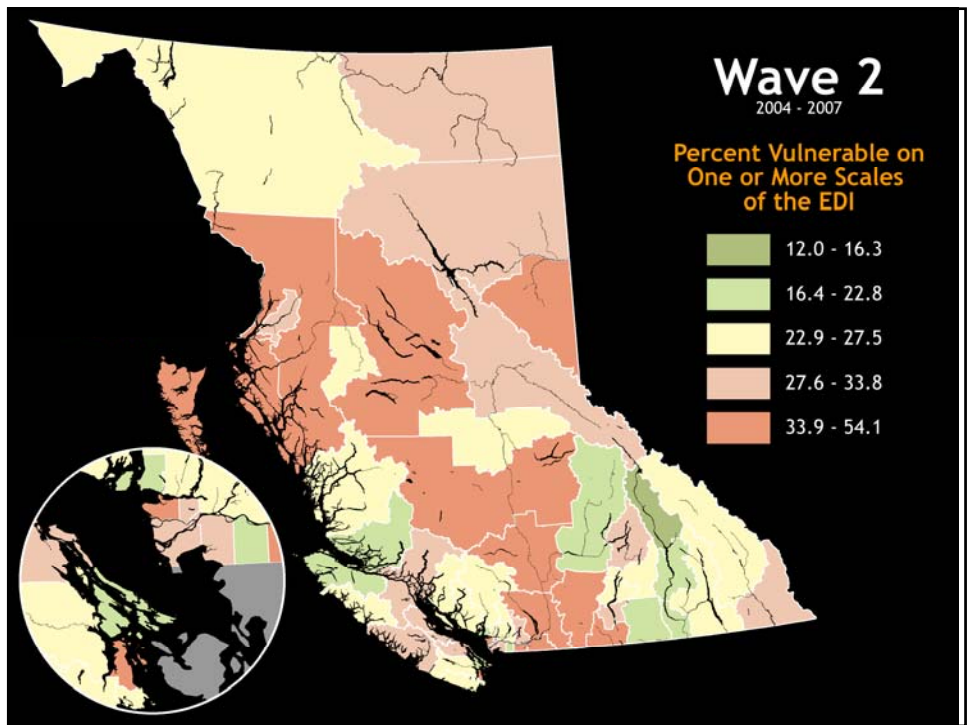
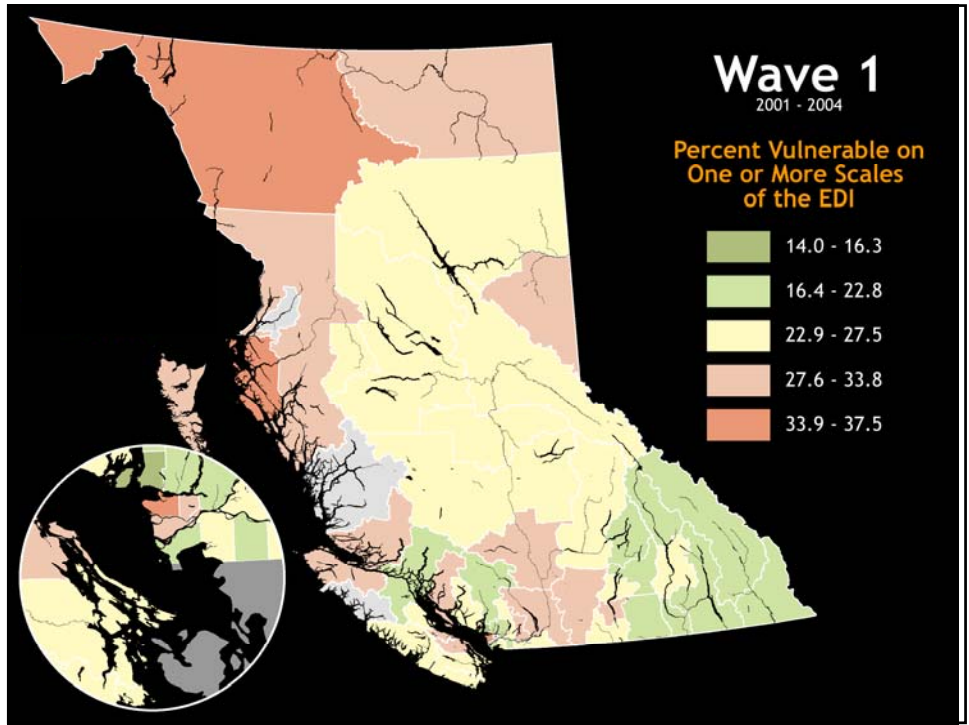
Cette présentation a été effectuée le 12 mars 2010, au cours de la journée « Agir collectivement pour débiter l'école du bon pied! » dans le cadre des Journées annuelles de santé publique (JASP) 2010. L'ensemble des présentations est disponible sur le site Web des JASP, à l'adresse <http://www.inspq.qc.ca/archives/>.

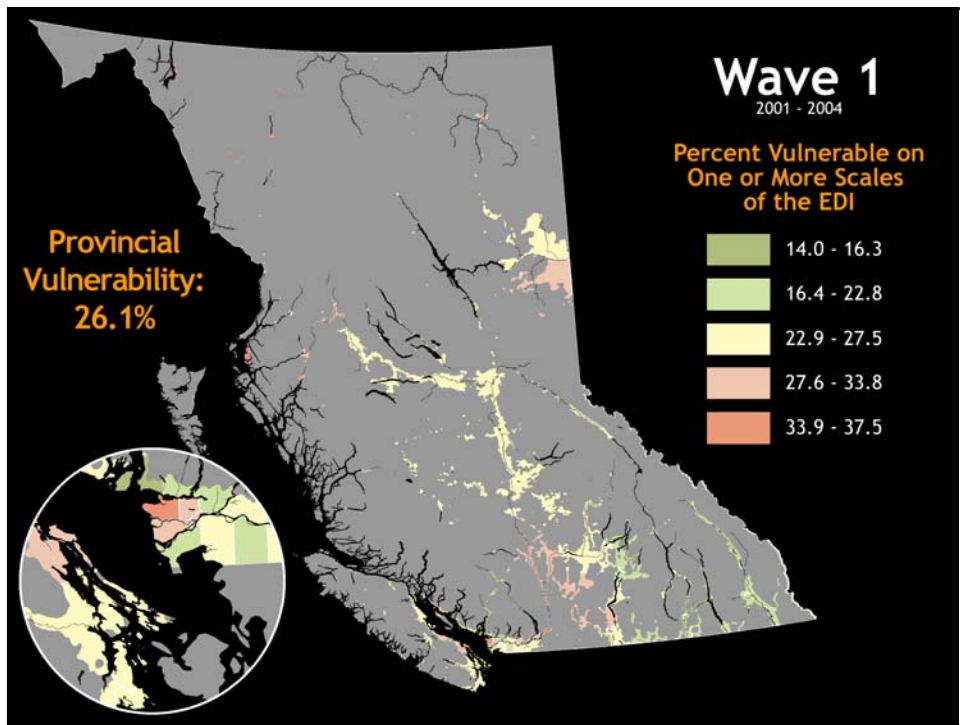
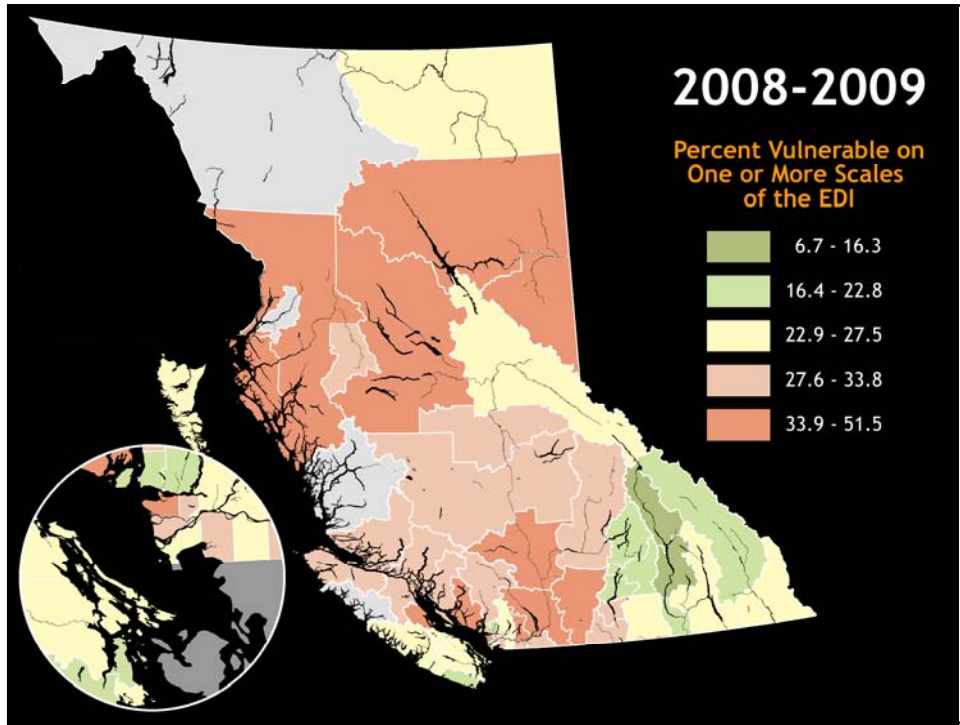


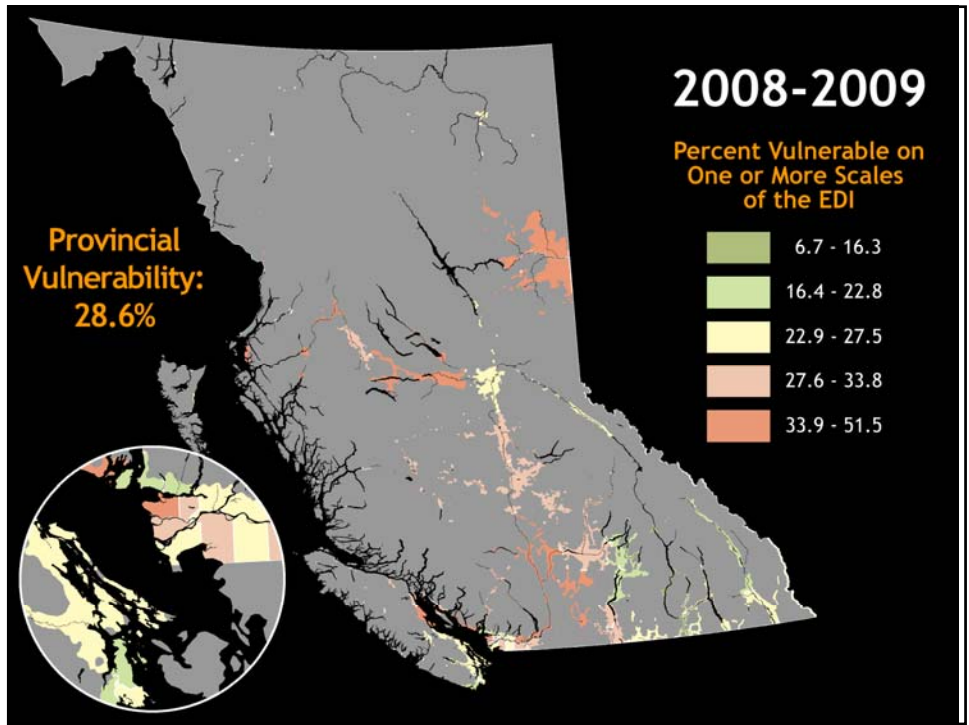
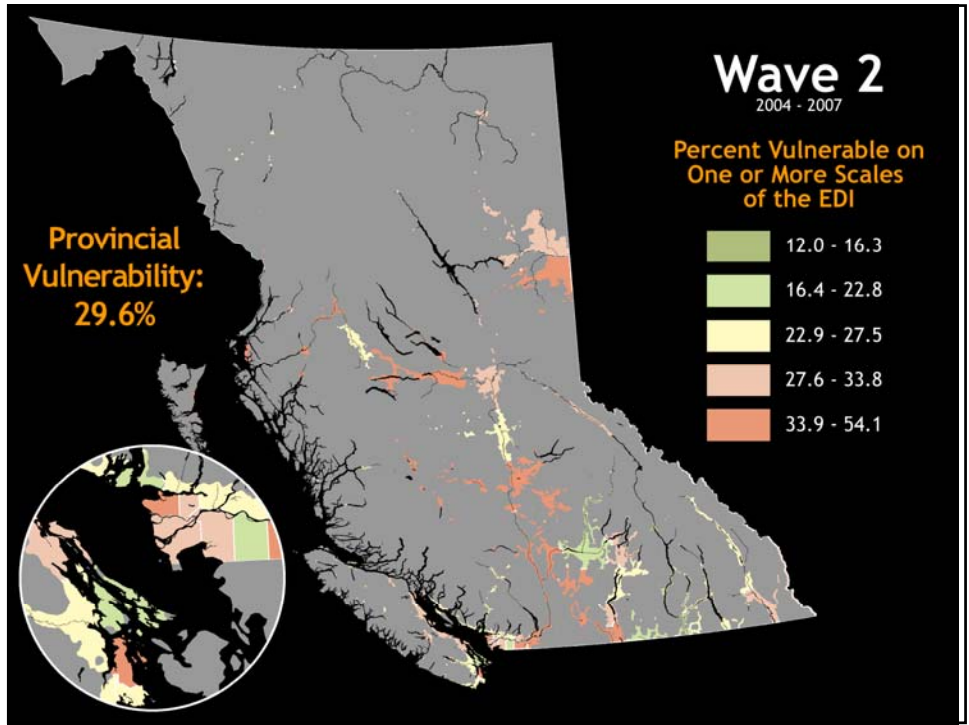


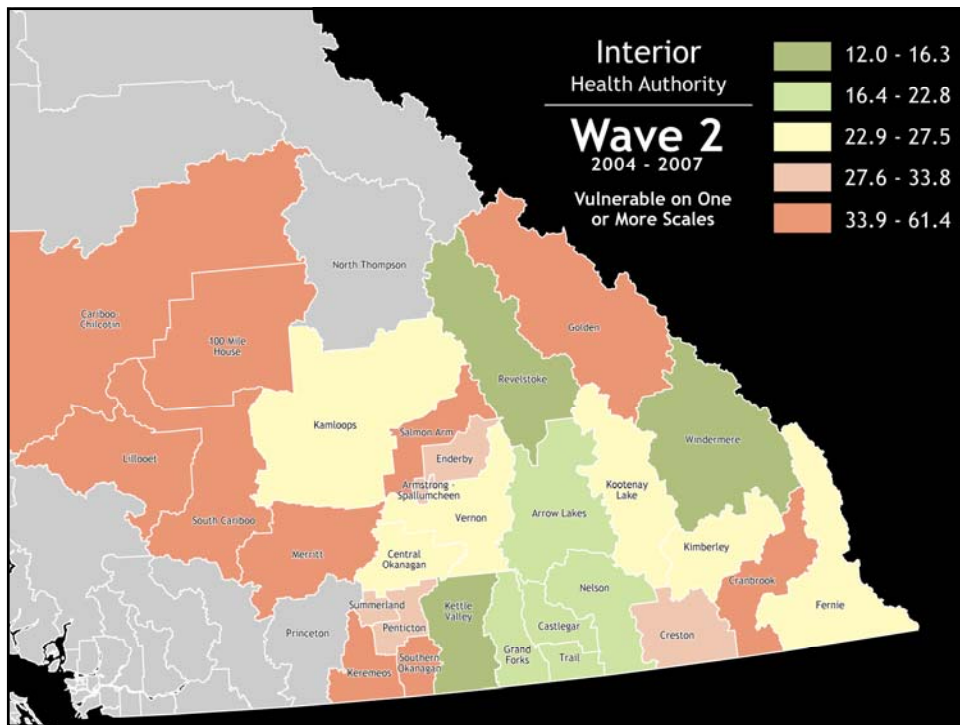
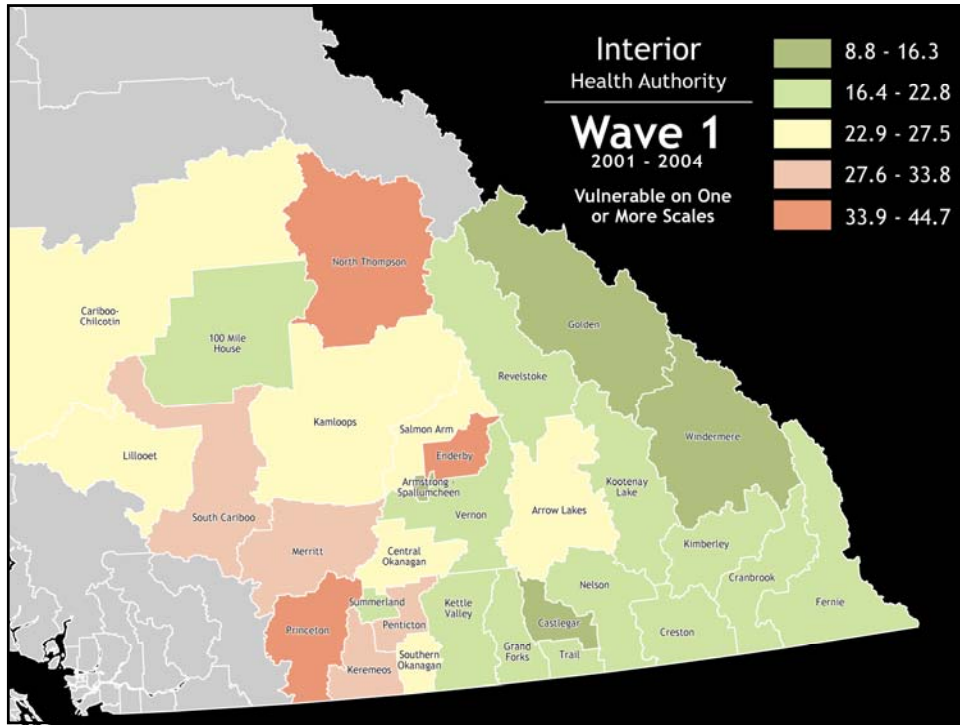


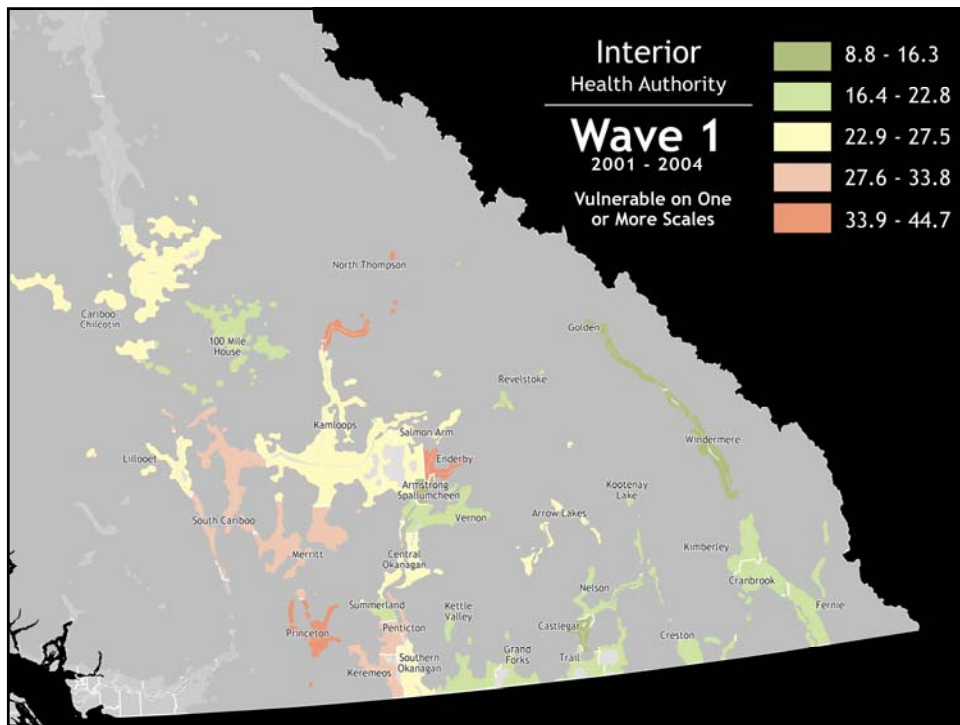
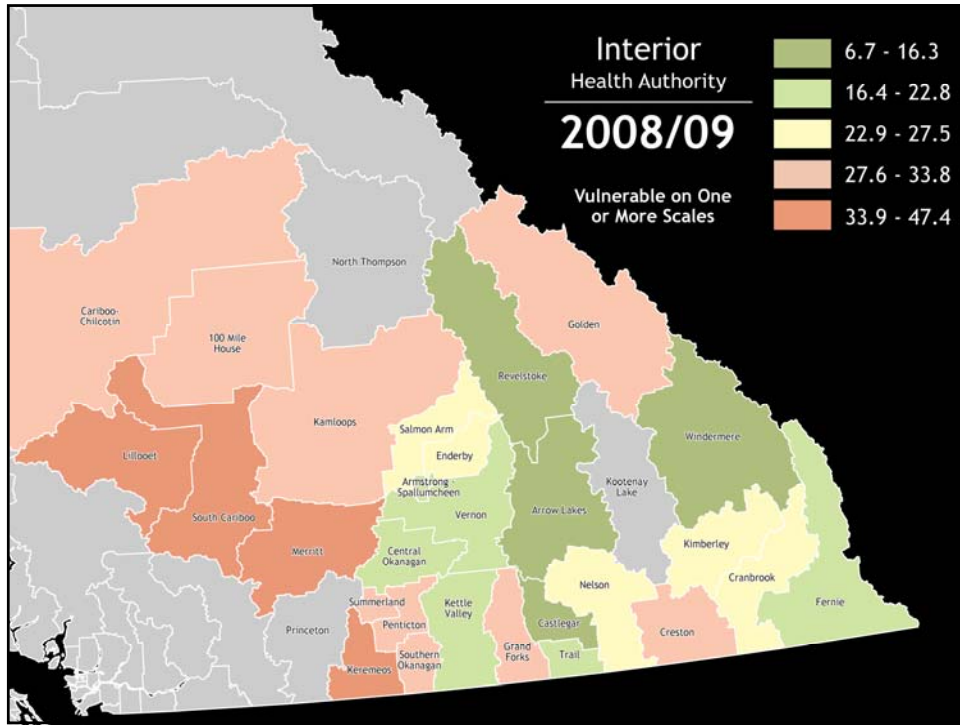


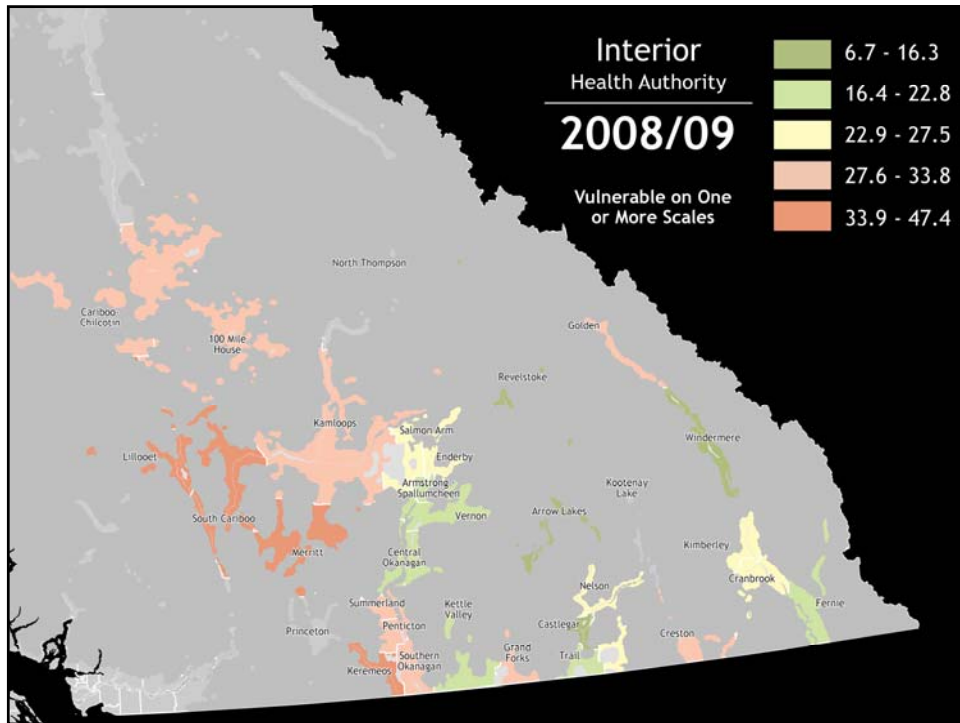
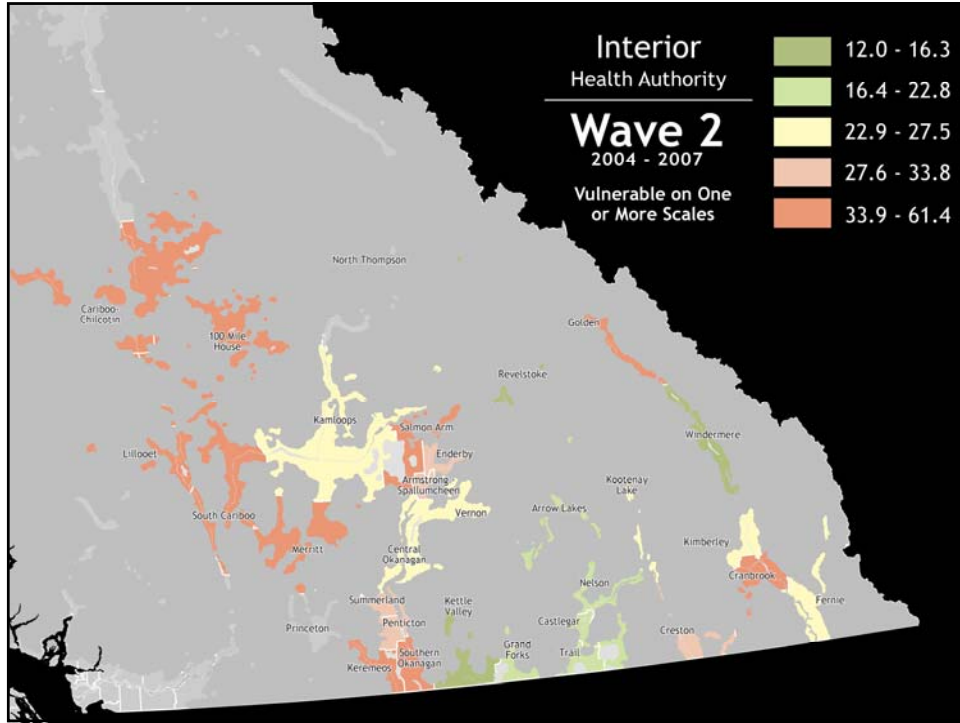




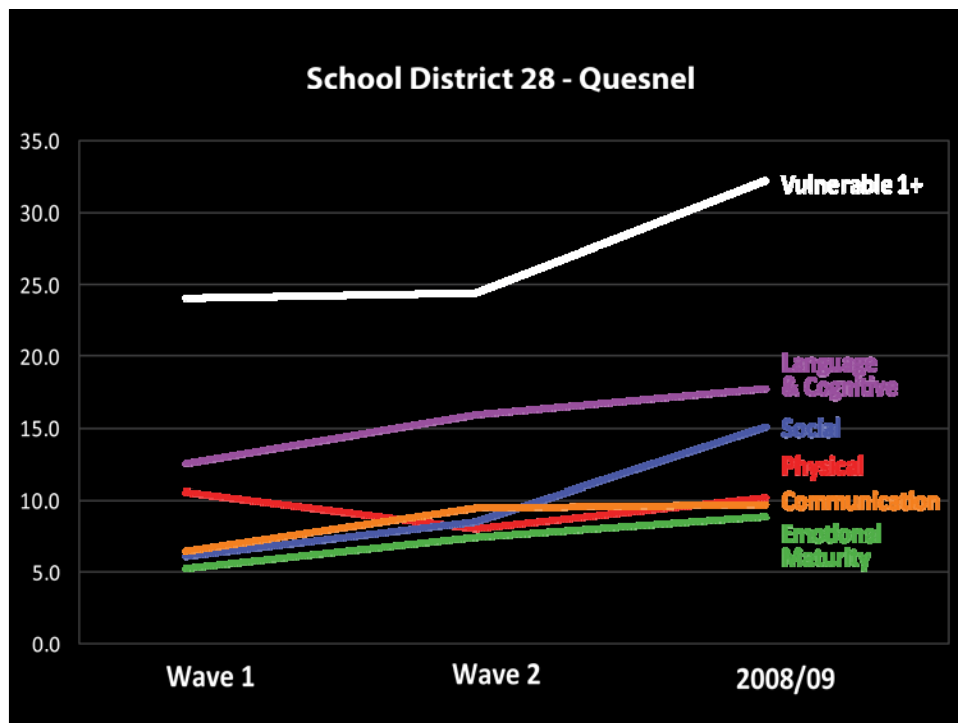








Communities Over Time



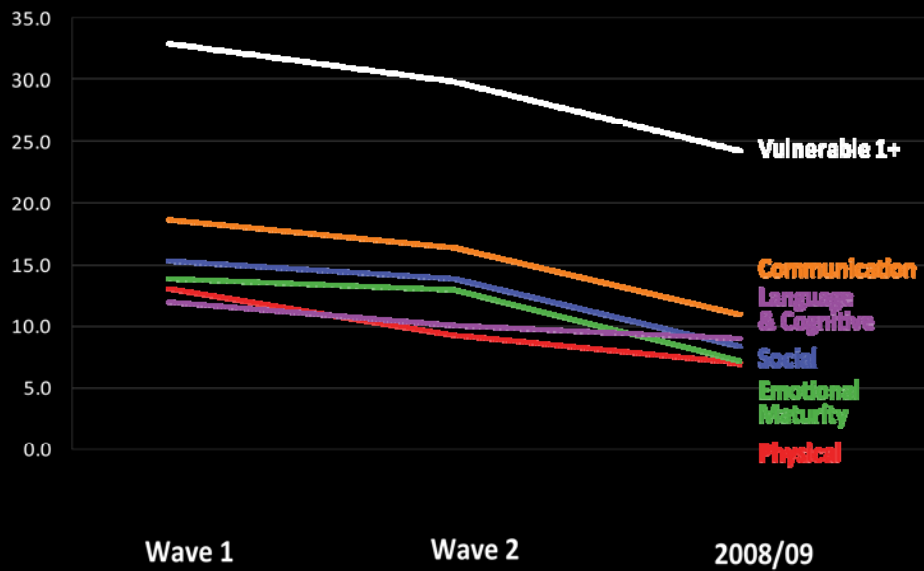
British Columbia

Communication Skills

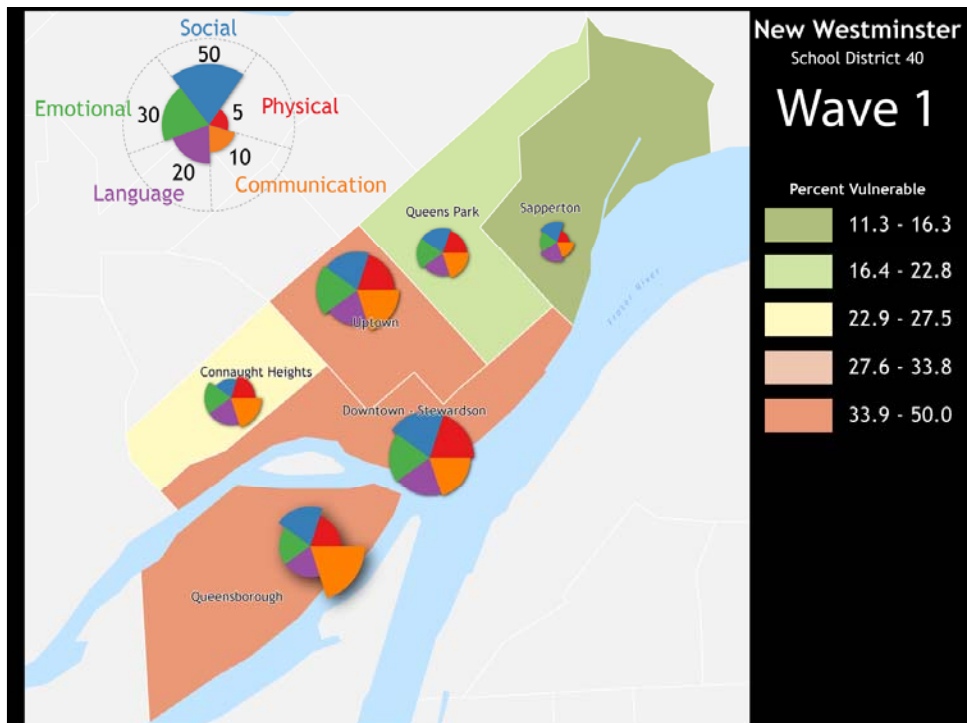
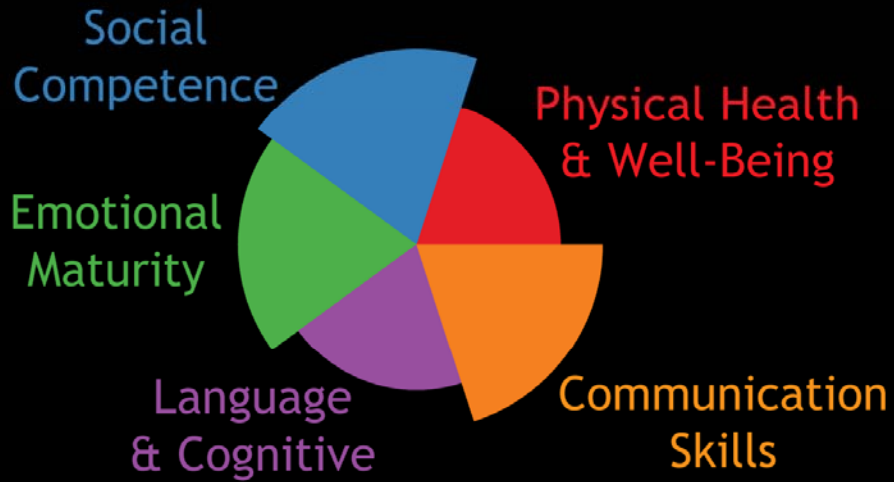
Neighbourhood Distribution

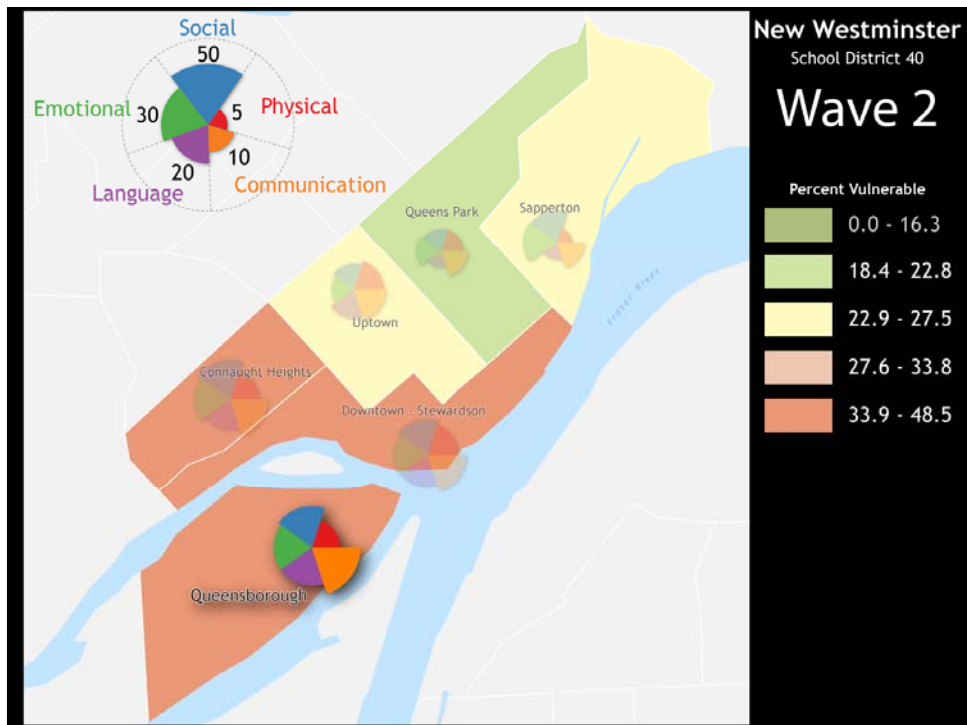
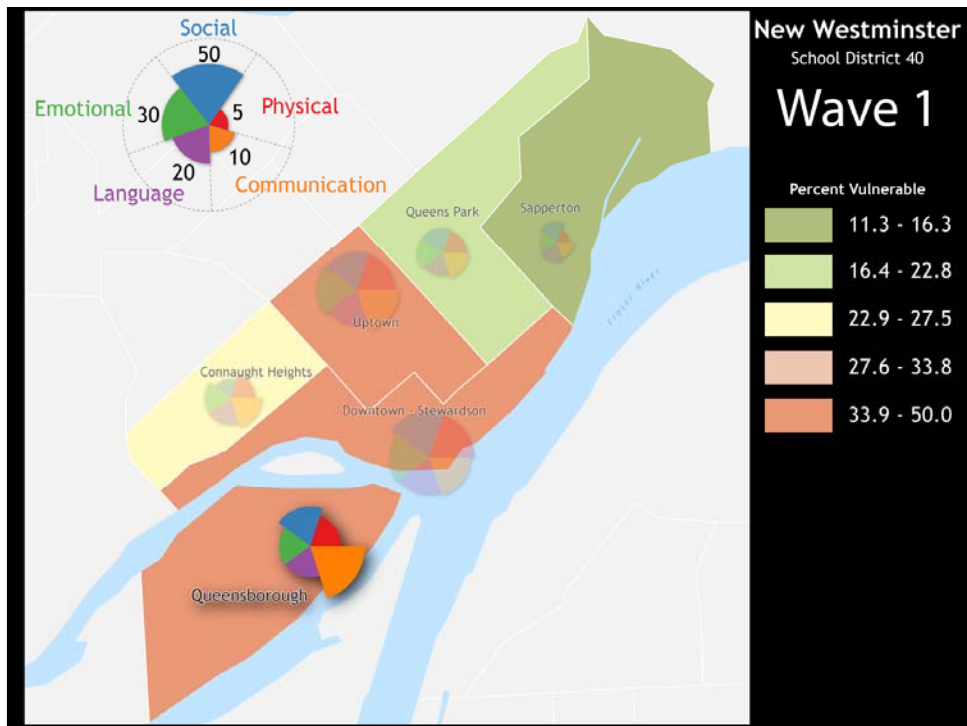


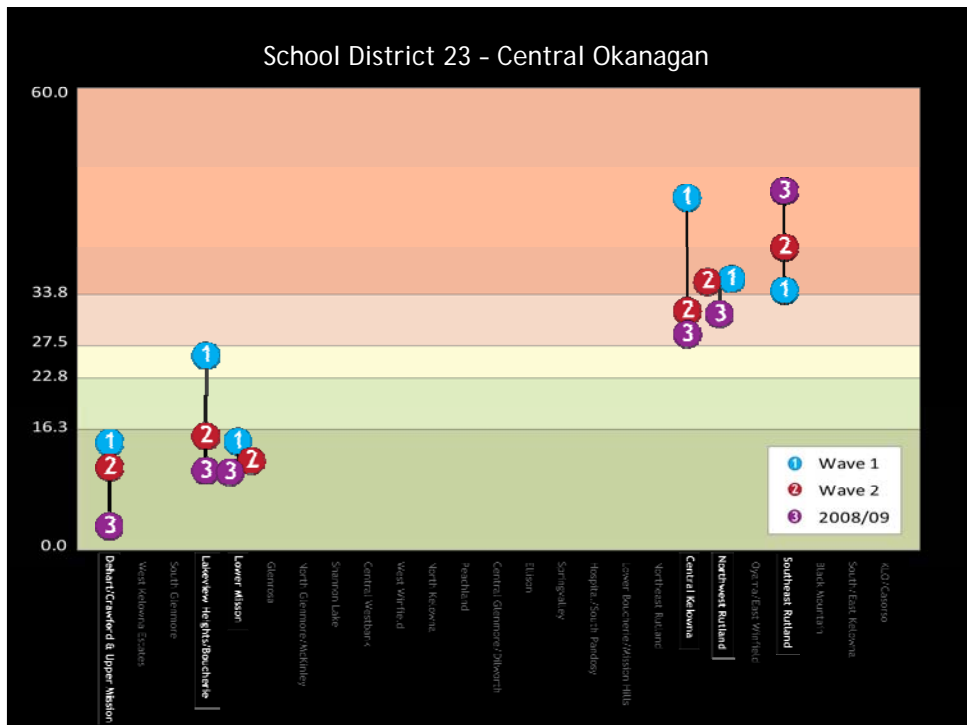
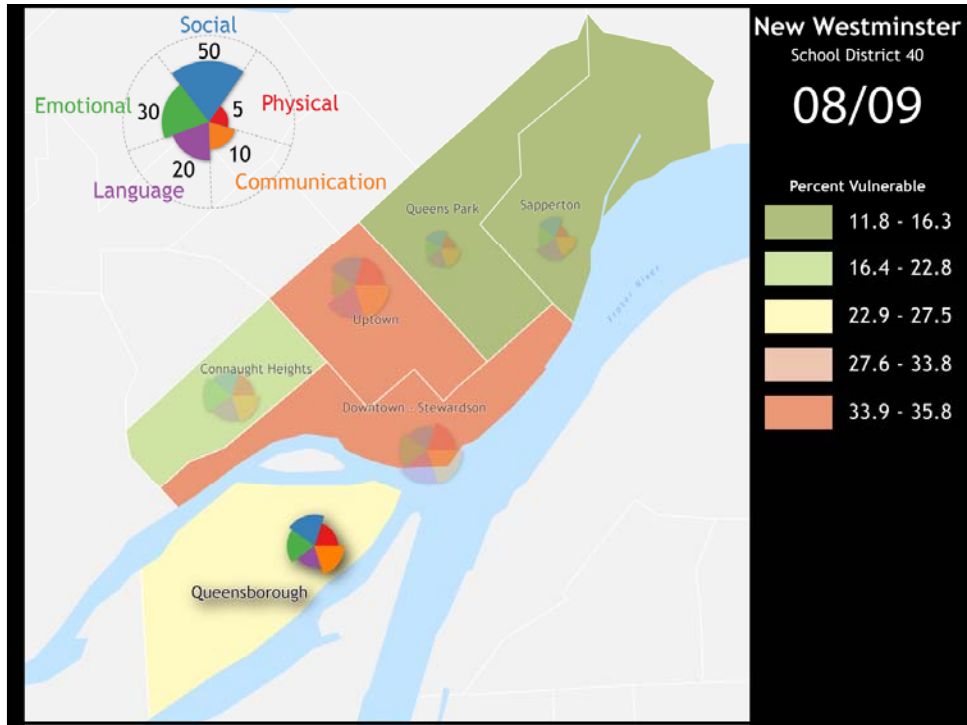
School District 40 - New Westminister

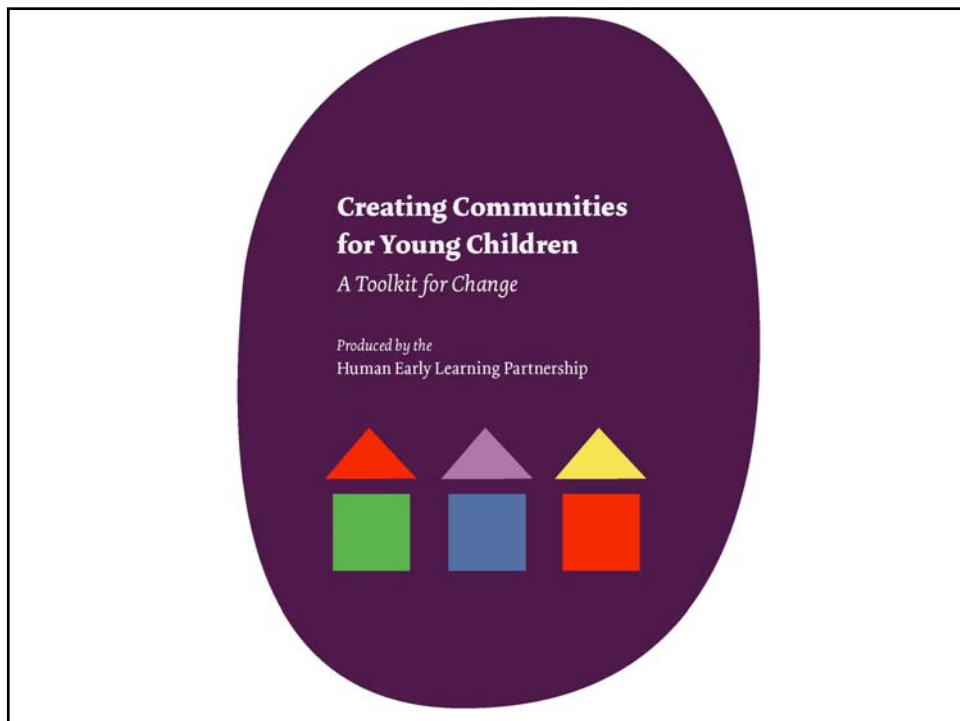


Scales of the EDI











Community Impact

- Large neighbourhood differences in the proportion of developmentally vulnerable children
- The high proportion of avoidable vulnerability
- The degree to which socio-economic factors influence early development
- How gradients in children's development play out in local communities
- Rationale for new programs and policies

